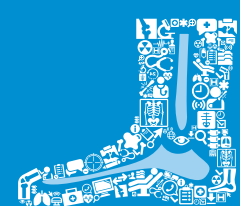


Start your future career in Medical Imaging & Therapeutic Sciences



Bachelor of Science (BSc) Diagnostic Radiography



Bachelor of Science (BSc) Radiation Therapy



Bachelor of Science (BSc) Nuclear Medicine Technology



Bachelor of Science (BSc) Diagnostic Ultrasound



Cape Peninsula University of Technology

creating futures

Do you want to help cure diseases?

As a radiographer you will make use of various technologies for the diagnosis and treatment of disease.

You can choose between any of the following BSc Radiography programmes:

- Diagnostic Radiography
- Radiation Therapy
- Nuclear Medicine Technology
- Diagnostic Ultrasound

A career in this field offers you the perfect balance between working with people and the use of modern technology.

YOU WILL LIKE THIS IF

You have an interest in medical technologies, imaging and healing, and work well with people.

YOU WILL STUDY AT

Belville Campus

YOU WILL STUDY FOR

Four years, full-time

Diagnostic Radiography

YOUR FUTURE SUBJECTS

FIRST YEAR

- The Health Care Professional 1
- Human Sciences 1
- Patient Care and Management 1
- Physical Science 1
- Health Science Literacy 1
- Radiographic Technology 1
- Clinical Radiographic Technology 1

SECOND YEAR

- The Health Care Professional 2
- Human Science 2
- Patient Care & Management 2
- Physical Science 2
- Health Science Literacy 2
- Radiographic Technology 2
- Clinical Radiographic Technology 2

THIRD YEAR

- Advanced Health Care Practice 3
- Human Sciences 3
- Radiographic Management 3
- Diagnostic Imaging Equipment 3
- Health Science Research 3



- Radiographic Technology 3
- Clinical Radiographic Technology 3

FOURTH YEAR

- Human Sciences 4
- Radiographic Management 4
- Diagnostic Imaging Equipment 4
- Health Science Research 4
- Radiographic Technology 4
- Clinical Radiographic Technology 4

Select one of the following set of electives (set 1):

- Entrepreneurship 4
- Health Science Education 4

Select one of the following set of electives (set 2):

- Mammography 4
- Magnetic Resonance Imaging 4

Your on-the-job training

You will be placed for compulsory experiential/ clinical training at Groote Schuur, Tygerberg, or any satellite hospital and Community Health Care Centre. Work-Integrated Learning (WIL) is compulsory for all four levels of study. You will learn to work within a multidisciplinary team in the production of digital images that may be used to diagnose or confirm medical diagnoses and to aid in therapeutic and interventional procedures. You'll also learn to utilise radiation to produce images of the human body, including General and Specialised Radiography, Trauma and Theatre Radiography, Angiography, Mammography, and Computer Tomography.

Radiation Therapy

YOUR FUTURE SUBJECTS

FIRST YEAR

- The Health Care Professional 1
- Human Sciences 1
- Health Science Literacy 1
- Medical Imaging & Oncologic Modalities 1
- Patient Care & Management 1
- Physical Sciences 1

SECOND YEAR

- The Health Care Professional 2
- Human Sciences 2
- Health Science Literacy 2
- Patient Care & Management 2
- Physical Sciences 2
- Radiation Therapy Practice 2

THIRD YEAR

- Advanced Health Care Professional 3
- Human Sciences 3
- Health Science Research 3
- Patient Care & Management 3
- Physics of Radiation Therapy 3
- Radiation Therapy Practice 3

FOURTH YEAR

- Human Sciences 4
- Health Science Research 4
- Physics of Radiation Therapy 4
- Radiation Therapy Practice 4
- Advanced Health Care Prof Practice 4

Select one of the following set of electives (set 1):

- Entrepreneurship 4
- Health Science Education 4

Select one of the following set of electives (set 2):

- Palliative Care in Radiation Oncology 4
- Advanced Radiotherapy Dosimetry & Graphic Plan 4

Your on-the-job training

You will be placed for compulsory experiential/ clinical training at Groote Schuur, Tygerberg, or a private practice. Work-Integrated Learning (WIL) is compulsory for all four levels of study. You will learn to use high energy radiation to administer a therapeutic dose to a patient, mainly (but not exclusively) to treat malignant diseases. You will also learn to manage the psychological and emotional aspects that patients may experience during the course of treatment. Your exposure to real work situations will include treatment simulation, graphic planning, dosimetry, quality assurance, counselling, and treatment delivery.

Nuclear Medicine Technology



YOUR FUTURE SUBJECTS

FIRST YEAR

- The Health Care Professional 1
- Human Sciences 1
- Health Science Literacy 1
- Medical Imaging & Oncologic Modalities 1
- Patient Care & Management 1
- Physical Sciences 1

SECOND YEAR

- The Health Care Professional 2
- Human Sciences 2
- Health Science Literacy 2
- Nuclear Medicine Technology 2
- Patient Care & Management 2
- Physical Sciences 2

THIRD YEAR

- Advanced Health Care Practice 3
- Human Sciences 3
- Health Science Research 3
- Nuclear Medicine Management 3
- Nuclear Medicine Technology 3
- Nuclear Medicine Sciences 3

FOURTH YEAR

- Advanced Nuclear Medicine Technology 4
- Human Sciences 4
- Health Science Research 4
- Nuclear Medicine Management 4
- Nuclear Medicine Sciences 4

Select one of the following set of electives (set 1):

- Health Science Education 4
- Entrepreneurship 4

Elective (set 2):

- Molecular Imaging 4

Your on-the-job training

You will be placed for compulsory experiential/ clinical training at Groote Schuur, Tygerberg, or a private practice. Work-Integrated Learning (WIL) is compulsory for all four levels of study. You will learn how to use radioactivity in the diagnosis and, to a lesser extent, the treatment of disease. You will also learn how to use a Gamma Camera in order to obtain information on the structure and function of organs.

Diagnostic Ultrasound

YOUR FUTURE SUBJECTS

FIRST YEAR

- The Health Care Professional 1
- Human Sciences 1
- Health Science Literacy 1
- Medical Imaging & Oncologic Modalities 1
- Patient Care & Management 1
- Physical Sciences 1

SECOND YEAR

- Diagnostic Ultrasound Practice 2
- The Health Care Professional 2
- Human Sciences 2
- Health Science Literacy 2
- Patient Care & Management 2
- Physical Sciences 2

THIRD YEAR

- Diagnostic Ultrasound Practice 3
- Advanced Health Care Practice 3
- Human Sciences 3
- Health Science Research 3
- Ultrasound Imaging Equipment 3
- Ultrasound Management 3



FOURTH YEAR

- Advanced Diagnostic Ultrasound Practice 4
- Health Science Research 4
- Ultrasound Imaging Equipment 4
- Ultrasound Management 4

Select one of the following set of electives (set 1):

- Entrepreneurship 4
- Health Science Education 4

One of the following electives (set 2):

- Mammography 4
- Magnetic Resonance Imaging 4

Your on-the-job training

You will be placed for compulsory experiential/ clinical training at Groote Schuur, Tygerberg, or any satellite hospital and Community Health Care Centre as well as private practice. Work-Integrated Learning (WIL) is compulsory for all four levels of study. You will be exposed to the use of high frequency sound waves applied to the body to image internal organs and structures. You will learn to image the fetus, abdominal and pelvic organs, blood vessels and blood flow, and superficial structures such as the thyroid, breast and musculo-skeletal system. You'll learn to work in close collaboration within a multidisciplinary team.

#weare
CPUT
creating futures

creating futures in healthcare

YOUR FUTURE SELF

Future studies

MSc in Radiography
Doctor of Radiography

Future industries

Public and private sector hospitals
Research institutes
Universities
Companies designing imaging equipment
Job opportunities Internationally

Future career

Radiographers must be registered with the Health Professions Council of South Africa in order to practice.

WHAT YOU NEED

Minimum Admission Requirements

DIAGNOSTIC RADIOGRAPHY

National Senior Certificate (Grade 12) with:

- *Home Language (4) or First Additional Language (4)
- Mathematics (4)
- Physical Science (4) or Life Sciences (4)

RADIATION THERAPY

National Senior Certificate (Grade 12) with:

- *Home Language (4) or First Additional Language (4)
- Mathematics (4)
- Physical Science (4) or Life Sciences (4)

NUCLEAR MEDICINE

National Senior Certificate (Grade 12) with:

- *Home Language (4) or First Additional Language (4)
- Mathematics (4)
- Physical Science (4)
- Life Sciences (4)

DIAGNOSTIC ULTRASOUND

National Senior Certificate (Grade 12) with:

- *Home Language (4) or First Additional Language (4)
- Mathematics (4)
- Physical Science (4) or Life Sciences (4)

*At least one of these must be English

The department utilises an Admission Point Score (APS) as selection criteria once your minimum admission requirements are satisfied. You also have to score a minimum of **30** on the APS.

HOW TO APPLY



MANUAL APPLICATIONS

Do you qualify to apply manually?

Please note: a non-refundable application fee will be applicable. Manual applications are only available to the following persons:

- Applicants applying for RPL (Recognition of Prior Learning)
- Non-South African citizens
- South-African citizens with international qualifications
- Applicants with permanent residence in South Africa
- Refugee asylum seeker temporary permit/ formal recognition of refugee status in the RSA

- 1 Choose a qualification
- 2 Complete an application form
- 3 Gather your documents (i.e. certified copies less than three months old)
- 4 Fill in the application form
- 5 Pay the application fee
- 6 Hand deliver or post your form and certified copies of documents to our District Six, Belville, Mowbray, or Wellington Campuses (Admin buildings)
- 7 Follow-up and get your admission status via the online application tracking system by visiting www.cput.ac.za/study/track



ONLINE APPLICATIONS

Do you qualify to apply online?



The following persons may only apply online, i.e. no manual applications will be allowed:

- South African citizens with South African qualifications
- Returning students with a break in studies (more than 1-year break)

- 1 Choose your qualification by consulting this brochure or the website
- 2 Gather your documents (i.e. certified copies less than three months old)
- 3 Download the online application guide available on our website for information on how to apply online
- 4 Complete your application online by visiting www.cput.ac.za/study/apply
- 5 Follow-up and get your admission status via the online application tracking system by visiting www.cput.ac.za/study/track

CLOSING DATES

31 AUGUST
International applicants
30 SEPTEMBER
South African citizens

CONTACT DETAILS

DIAGNOSTIC RADIOGRAPHY

+27 (0)21 959 5595/ 6538
dariesv@cput.ac.za
fortuins@cput.ac.za

RADIATION THERAPY

+27 (0)21 959 6538/ 6045
HUDSONI@cput.ac.za
fortuins@cput.ac.za

NUCLEAR MEDICINE

021 959 6538/ 6535
lackayc@cput.ac.za
fortuins@cput.ac.za

DIAGNOSTIC ULTRASOUND

021 953 8415/ 959 6538
kempme@cput.ac.za
fortuins@cput.ac.za

+27 (0)21 959 6767
info@cput.ac.za
www.cput.ac.za
@cput
@wearcput
www.facebook.com/cput.ac.za

Cape Peninsula University of Technology
creating futures

DISCLAIMER

Meeting the minimum requirements does not guarantee admission. This information is subject to change based on approval and accreditation of HEQSF aligned qualifications during 2018/ 2019.

Admission requirements may therefore differ between the existing qualification and the HEQSF aligned qualification. Please consult the CPUT website or faculty for updated information. Every effort has been made to ensure the accuracy of the information in this pamphlet; however the University reserves the right at any time, if circumstances require to make changes to any of the published details.