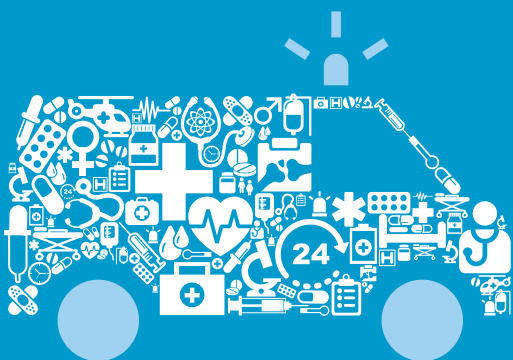


Start your future career in Emergency Care

Diploma in Emergency Care
Bachelor of Emergency Medical Care



CONTACT

+27 (0)21 953 8408
MfecaneN@cput.ac.za



Cape Peninsula
University of Technology
creating futures

#weare
CPUT
creating futures

YOUR FUTURE SELF

Future studies

Upon completion of the Diploma in Emergency Care: Bachelor of Emergency Care

Upon completion of the Bachelor in Emergency Care: Master of Emergency Care

Future industries

Employment opportunities exist within provincial emergency and rescue services, fire and rescue services, private emergency services, SANDF, mining industry, as well as international aid agencies and emergency services.

Future career

On completion of the Diploma in Emergency Care, you will register with the HPCSA as an Emergency Care Technician.

Once you've completed your Bachelor of Emergency Medical Care, you will register with the Health Professions Council of South Africa (HPCSA) as an Emergency Care Practitioner.

Do you wish to save lives?

A career in emergency care is both exciting and demanding, requiring mental alertness and rigorous physical fitness to make life and death decisions in an environment that can be dangerous and difficult.

You will be trained to treat patients that need urgent medical care by performing pre-hospital medical procedures.

YOU WILL LIKE THIS IF

You have an interest in the medical field and you are committed to improving the health and wellness of individuals and communities.

YOU WILL STUDY AT

Bellville Campus

YOU WILL STUDY FOR

Two years, full-time (Diploma Emergency Care)
Four years, full-time (Bachelor of Emergency Medical Care)
Five years, full-time (Extended Curriculum Programme)

WHAT YOU NEED

Minimum Admission Requirements

National Senior Certificate (Grade 12) with:

DIPLOMA

- Mathematics (3)
- Life Sciences (3)
- Physical Sciences (3)
- English (3)

BACHELOR

- Mathematics (4)
- Life Sciences (4)
- Physical Sciences (4)
- English (4)

The department utilises an Admission Point Score (APS) as selection criteria once your minimum admission requirements are satisfied. You also have to score a minimum of the following on the APS:

DIPLOMA
• 28

BACHELOR
• 35

ECP
• 30 - 34

Additional Admission Requirements

- Selection interview
- Physical and medical assessment
- Height and claustrophobia test
- Job shadowing
- A final selection test will depend on your overall performance

Note

CPUT's Recognition of Prior Learning (RPL) policy will apply to applicants with existing short course qualifications and relevant experience.

Closing date for RPL Applications is: 30 June

DISCLAIMER

Meeting the minimum requirements does not guarantee admission. This information is subject to change based on approval and accreditation of HEQSF aligned qualifications during 2018/ 2019.

Admission requirements may therefore differ between the existing qualification and the HEQSF aligned qualification. Please consult the CPUT website or faculty for updated information. Every effort has been made to ensure the accuracy of the information in this pamphlet; however the University reserves the right at any time, if circumstances require to make changes to any of the published details.

YOUR SUBJECTS

BACHELOR

FIRST YEAR

- Emergency Medical Care
- Basic Sciences
- Anatomy and Physiology
- Medical Rescue
- Foundations of Practice

SECOND YEAR

- Emergency Medical Care
- Primary health care
- Diagnostics
- Medical rescue
- Physiology

THIRD YEAR

- Emergency medical care
- Pharmacology
- General pathology
- Medical rescue
- Research methodology

FOURTH YEAR

- Emergency medical care
- Research elective
- Medical rescue
- Emergency services management

DIPLOMA

FIRST YEAR

- Foundations of Professional Practice
- Basic Sciences
- Anatomy and Physiology
- Pre-Hospital Emergency Care: Medical 1
- Pre-Hospital Emergency Care: Trauma 1
- Pre-Hospital Emergency Care: Practice 1
- Workplace Clinical Practice 1

SECOND YEAR

- Pre-Hospital Emergency Care: Medical 2
- Pre-Hospital Emergency Care: Trauma 2
- Pre-Hospital Emergency Care: Practice 2
- Workplace Clinical Practice 2
- Critical Care Transport
- Basic Medical Rescue

Extended Curriculum Programme (ECP)

This provides first year students with additional academic support during which you have two years to complete the first year of your degree. You may be required to enrol on the ECP based on assessment of your Academic Points Score (APS).



Your on-the-job training

Work-Integrated Learning (WIL) on ambulances and in health facilities is a key component of all years of the programmes.

HOW TO APPLY



MANUAL APPLICATIONS

Do you qualify to apply manually?

Please note: a non-refundable application fee will be applicable.

Manual applications are only available to the following persons:

- Applicants applying for RPL (Recognition of Prior Learning)
- Non-South African citizens
- South-African citizens with international qualifications
- Applicants with permanent residence in South Africa
- Refugee asylum seeker temporary permit/ formal recognition of refugee status in the RSA

- 1 Choose a qualification
- 2 Complete an application form
- 3 Gather your documents (i.e. certified copies less than three months old)
- 4 Fill in the application form
- 5 Pay the application fee
- 6 Hand deliver or post your form and certified copies of documents to our District Six, Bellville, Mowbray, or Wellington Campuses (Admin buildings)
- 7 Follow-up and get your admission status via the online application tracking system by visiting www.cput.ac.za/study/track



ONLINE APPLICATIONS

Do you qualify to apply online?

ONLINE APPLICATIONS ARE FREE

The following persons may only apply online, i.e. no manual applications will be allowed:

- South African citizens with South African qualifications
- Returning students with a break in studies (more than 1-year break)

- 1 Choose your qualification by consulting this brochure or the website
- 2 Gather your documents (i.e. certified copies less than three months old)
- 3 Download the online application guide available on our website for information on how to apply online
- 4 Complete your application online by visiting www.cput.ac.za/study/apply
- 5 Follow-up and get your admission status via the online application tracking system by visiting www.cput.ac.za/study/track

CLOSING DATES

31 AUGUST

International applicants

30 SEPTEMBER

South African citizens

+27 (0)21 959 6767
info@cput.ac.za
www.cput.ac.za
@cput
@wearecput
www.facebook.com/cput.ac.za

Cape Peninsula
University of Technology
creating futures