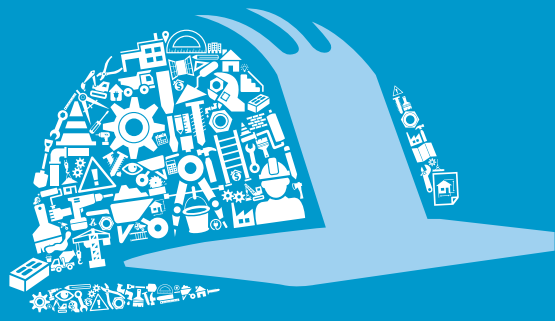


Start your future career in Construction

Diploma in Construction



CONTACT

+27 (0)21 959 6631
didizan@cput.ac.za



Cape Peninsula
University of Technology
creating futures

#weare
CPUT
creating futures

YOUR FUTURE SELF

Future studies

BTech Construction Management
BTech Construction Management (Facility Management)
BTech Construction Management (Health and Safety)
BTech Quantity Surveying
Master of Construction

Future industries

Banking
Mining
Green Building (Manufacturing and Physical Construction)
Consulting
Engineering
Self-employment

Future career

Construction manager
Quantity surveyors
Consultant
Contractor

creating futures in engineering

Do you like working with your hands?

From managing the construction of new roadways to building stadiums, graduates with a building qualification are sought after in industry. They are involved in all management aspects in the construction industry.

YOU WILL LIKE THIS IF

You are interested in the construction industry and have strong mathematical skills.

YOU WILL STUDY AT

Bellville Campus

YOU WILL STUDY FOR

Three years, full-time

WHAT YOU NEED

Minimum Admission Requirements

National Senior Certificate (NSC/ Grade 12) with:
*A minimum achievement rating of 4 in at least 4 NSC 20-credit subjects.

- English (4)
- Mathematics (4)
- Physical Science (4)

Recommended: Any of the following

- Accounting (3)
- Business Studies (3)
- Economics (3)
- Civil Technology (3)
- Engineering Graphic Design (3)
- Computer Applications Technology (3)
- Information Technology (3)
- Physical Science (3)

National Certificate:

- Mathematics (N4/ 60%)

National Certificate Vocational (NCV)

- English (60 – 69%)/ (5)
- Mathematics (60 – 69%)/ (5)

The department utilises an Admission Point Score (APS) as selection criteria once your minimum admission requirements are satisfied. You also have to score a minimum of **25** on the APS for the mainstream course, **20 – 24** for the Extended Curriculum Programme (ECP).

DISCLAIMER

Meeting the minimum requirements does not guarantee admission. This information is subject to change based on approval and accreditation of HEQSF aligned qualifications during 2018/ 2019. Admission requirements may therefore differ between the existing qualification and the HEQSF aligned qualification. Please consult the CPUT website or faculty for updated information. Every effort has been made to ensure the accuracy of the information in this pamphlet; however the University reserves the right at any time, if circumstances require to make changes to any of the published details.

YOUR SUBJECTS

FIRST YEAR

- Construction Management 1
- Construction Technology 1
- Quantity Surveying 1
- Construction Mathematics
- Site Surveying
- Construction Science 1
- Technical Drafting
- Professional and Technical Communications 1
- Computer Skills and Applications

SECOND YEAR

- Integrated Construction Projects
- Quantity Surveying 2
- Construction Technology 2
- Construction Management 2
- Building Services
- Construction Health and Safety
- Construction Economics
- Construction Science 2
- Professional and Technical Communications 2

THIRD YEAR

- Construction Science 3
- Construction Technology 3
- Quantity Surveying 3
- Construction Management 3
- Price Analysis and Estimating
- Construction Entrepreneurship
- Construction Practice



Your on-the-job training

You will complete compulsory service learning projects while you work in your first and third year.

HOW TO APPLY



MANUAL APPLICATIONS

Do you qualify to apply manually?

Please note: a non-refundable application fee will be applicable. Manual applications are only available to the following persons:

- Applicants applying for RPL (Recognition of Prior Learning)
- Non-South African citizens
- South-African citizens with international qualifications
- Applicants with permanent residence in South Africa
- Refugee asylum seeker temporary permit/ formal recognition of refugee status in the RSA

- 1 Choose a qualification
- 2 Complete an application form
- 3 Gather your documents (i.e. certified copies less than three months old)
- 4 Fill in the application form
- 5 Pay the application fee
- 6 Hand deliver or post your form and certified copies of documents to our District Six, Bellville, Mowbray, or Wellington Campuses (Admin buildings)
- 7 Follow-up and get your admission status via the online application tracking system by visiting www.cput.ac.za/study/track



ONLINE APPLICATIONS

Do you qualify to apply online?

ONLINE APPLICATIONS ARE FREE

The following persons may only apply online, i.e. no manual applications will be allowed:

- South African citizens with South African qualifications
- Returning students with a break in studies (more than 1-year break)

- 1 Choose your qualification by consulting this brochure or the website
- 2 Gather your documents (i.e. certified copies less than three months old)
- 3 Download the online application guide available on our website for information on how to apply online
- 4 Complete your application online by visiting www.cput.ac.za/study/apply
- 5 Follow-up and get your admission status via the online application tracking system by visiting www.cput.ac.za/study/track

CLOSING DATES

31 AUGUST
International applicants
30 SEPTEMBER
South African citizens