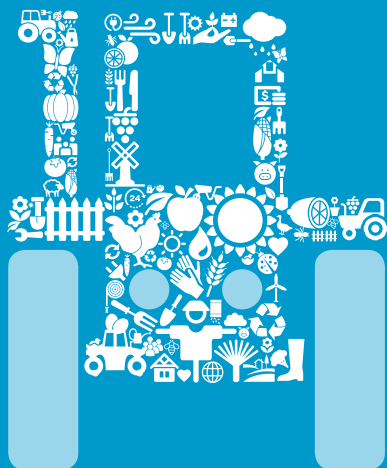


Start your future career in Agriculture

Diploma in Agriculture
Diploma in Agricultural Management



CONTACT

+27 (0)21 864 5217
BollityeA@cput.ac.za



Cape Peninsula
University of Technology
creating futures

Were you born to farm?

The importance of agriculture as a basic need for humanity's survival cannot be stressed more. Among others it sustains us, keeps us healthy and contributes to economic growth by creating jobs and exportable products.

At CPUT we offer:

- Agricultural Management
- Animal Production
- Crop Production
- Viticulture and Oenology

With this programme your future lies in the management of the agricultural industry. You will get actively involved in the day to day farming activities, including planning, care of, and harvesting of agricultural products.

YOU WILL LIKE THIS IF

You have an active interest in farming, growing produce or caring for animals and a love of the outdoors.

YOU WILL STUDY AT

Wellington campus

YOU WILL STUDY FOR

Three years, full-time

YOUR SUBJECTS

DIPLOMA IN AGRICULTURE

FIRST YEAR

- Plant production
- Agricultural economics and marketing
- Crop protection
- Agricultural soil science
- Agricultural calculations
- Agricultural extension
- Agricultural economics and marketing
- Crop protection
- Agricultural soil science
- Vegetable production (Crop course)
- Livestock production (Livestock course)
- Oenology (Viticulture and Oenology course)

SECOND YEAR

- Agricultural extension
- Biometry
- Crop protection
- Agricultural extension
- Agricultural economics and marketing
- Agricultural engineering
- Animal nutrition
- Livestock production
- Pasture science
- Fruit production
- Agronomy
- Animal nutrition
- Livestock production
- Agricultural extension
- Agricultural economics and marketing
- Agricultural engineering
- Viticulture

THIRD YEAR

- Introduction to Research Methodology
- Agricultural Environment
- Agricultural Production
- Agricultural Labour Practice
- Agricultural Management Information and Systems

DIPLOMA IN AGRICULTURAL MANAGEMENT

FIRST YEAR

- Plant production
- Agricultural marketing management
- Production and operational techniques
- Agricultural soil science
- Agricultural calculations
- Production and operational techniques
- Livestock production
- Agricultural marketing management
- Human resource management
- Agricultural soil science

SECOND YEAR

- Agricultural production management
- Agricultural law
- Plant production
- Livestock production
- Agricultural engineering
- Agricultural marketing management
- Plant production
- Livestock production
- Pasture science

THIRD YEAR

- Introduction to Research Methodology
- Agricultural Environment
- Production Systems Management
- Agricultural Labour Practice
- Management Information Systems



Your on-the-job training

You will do a **full year of Work Integrated Learning (WIL)** in the agricultural industry during your third year.

WHAT YOU NEED

Minimum Admission Requirements: Agriculture

National Senior Certificate (Grade 12) with:

- English (4)
- Mathematics (3)
- Life Science (4) or Physical Science (4)

Any other subjects except Life Orientation for the purpose of achieving the required APS score provided below.

The department utilises an Admission Point Score (APS) as selection criteria once your minimum admission requirements are satisfied. You also have to score a minimum of **26** with Mathematics on the APS.

Minimum Admission Requirements: Agricultural Management

National Senior Certificate (Grade 12) with:

- English (4)
- Mathematics (3) or Mathematical Literacy (5)
- Life Science (4) or Physical Science (4)

Any other subjects except Life Orientation for the purpose of achieving the required APS score provided below.

The department utilises an Admission Point Score (APS) as selection criteria once your minimum admission requirements are satisfied. You also have to score a minimum of **26** with Mathematics and **32** with Mathematical Literacy on the APS.

DISCLAIMER

Meeting the minimum requirements does not guarantee admission. This information is subject to change based on approval and accreditation of HEQSF aligned qualifications during 2018/ 2019.

Admission requirements may therefore differ between the existing qualification and the HEQSF aligned qualification. Please consult the CPUT website or faculty for updated information.

Every effort has been made to ensure the accuracy of the information in this pamphlet; however the University reserves the right at any time, if circumstances require to make changes to any of the published details.

HOW TO APPLY



MANUAL APPLICATIONS

Do you qualify to apply manually?

Please note: a non-refundable application fee will be applicable.

Manual applications are only available to the following persons:

- Applicants applying for RPL (Recognition of Prior Learning)
- Non-South African citizens
- South-African citizens with international qualifications
- Applicants with permanent residence in South Africa
- Refugee asylum seeker temporary permit/formal recognition of refugee status in the RSA

- 1 Choose a qualification
- 2 Complete an application form
- 3 Gather your documents (i.e. certified copies less than three months old)
- 4 Fill in the application form
- 5 Pay the application fee
- 6 Hand deliver or post your form and certified copies of documents to our District Six, Belville, Mowbray Wellington Campuses (Admin buildings)
- 7 Follow-up and get your admission status via the online application tracking system by visiting www.cput.ac.za/study/track



ONLINE APPLICATIONS

Do you qualify to apply online?

ONLINE APPLICATIONS ARE FREE

The following persons may only apply online, i.e. no manual applications will be allowed:

- South African citizens with South African qualifications
- Returning students with a break in studies (more than 1-year break)

- 1 Choose your qualification by consulting this brochure or the website
- 2 Gather your documents (i.e. certified copies less than three months old)
- 3 Download the online application guide available on our website for information on how to apply online
- 4 Complete your application online by visiting www.cput.ac.za/study/apply
- 5 Follow-up and get your admission status via the online application tracking system by visiting www.cput.ac.za/study/track

CLOSING DATES

31 AUGUST

International applicants

30 SEPTEMBER

South African citizens

YOUR FUTURE SELF

Future studies

Advanced Diploma in Agriculture
Postgraduate Diploma in Agriculture
Masters in Agriculture

Future industries

Agriculture
Food production

Future career

Input supplier
Production manager
Wine maker
Agricultural manager
Agricultural advisor
Agricultural trainer
Agricultural researcher
Pack-house manager
Chemical specialist
Agricultural engineer
Fertiliser agent
Quality inspector

#weare
CPUT
creating futures